

ROLEN-STAR AUDIO TRANSDUCER

INSTALLATION INSTRUCTIONS

(1) GENERAL INFORMATION

The Rolen-Star Audio Transducer, although classed with speakers is not a speaker. It is a sound transducer for solids, a means of causing structural solids to reproduce sound (ceilings, walls, floors, windows, furniture, doors, etc), and to reproduce sounds of voice and music with exceptional quality and clarity. The Rolen-Star Audio Transducer may be used either as a primary or auxiliary source of sound indoors or outdoors. It is omnidirectional, distributing clear dynamic sounds throughout the environment. The Rolen-Star Audio Transducer also permits greater decorator and architectural flexibility in room arrangements, such as existing walls, ceiling, furniture and floor surfaces which may be used in place of speaker enclosures.

(2) SPECIFICATIONS

Impedance	8 ohms
Minimum Power Required	1½ watts
Mid-Volume	6-8 watts
Maximum Power Handling Capacity	30 watts
Size	4" diameter x 1½" deep
Weight	2 pounds
Frequency Response	20 to 20,000 Hz (± 3 db)
	(may vary depending on surface mounted)

(3) SOUND SOURCE CONNECTION

Listed below are the basic steps for connecting the Rolen-Star Audio Transducer to your sound-source.

1. Unplug the electrical power to the sound source.
2. Select 18 gauge two conductor wire (the type wire used on household appliances, lamps, toasters, coffee pots) commonly referred to as "zip cord" wire.

The length of the wire should be long enough to go from the sound source to the most remote proposed Rolen-Star Audio Transducer location.

3. Connect one end of the wire to the sound source in the same manner as a conventional speaker is connected.
4. Connect the other end of the wire to the Rolen-Star Audio

(4) SOUND SOURCE CONNECTION ILLUSTRATIONS

The following illustrations (figures 2, 3, 4, 5, and 6) will assist you in visualizing typical connection sequences.

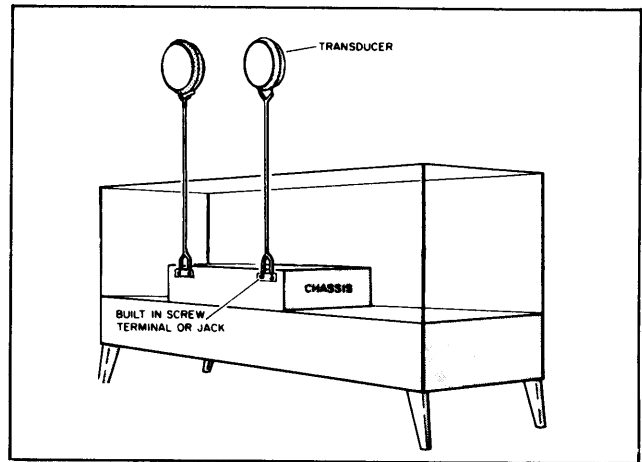


Figure 2. Transducers Connected to Sound Source. No Speakers.

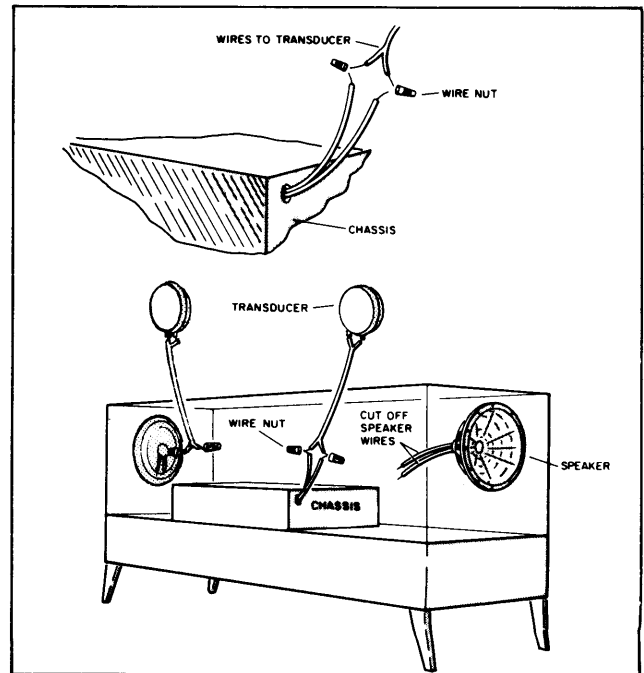
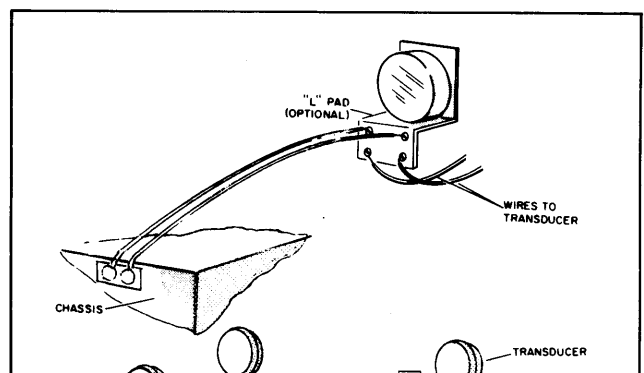


Figure 3. Speakers Disconnected. Transducers Connected to Sound Source.



(5)